

# BEST OF BOTH WORLDS



For these homeowners the kiwi dream of living beachside in a simple bach while sustaining everyday life became a reality.

Words **Lucinda Diack**  
Photography **Erin King & Mike Bowater**

LIVING IN THE RELAXED AND VERY KIWI beachside town of Waikanae could easily become a conformed way of life. For Tushka Glimtmeier and Nathan Rooney, living there turned into the purchase of side by side sections and the dream of building their own home. As owner/operators of Space Architecture Studio and professional members of Architectural Designers NZ (ADNZ) they were eager to design something for themselves. “We are exposed to so many exciting ideas that it was wonderful to be able to incorporate them into a design that we would get to use. Although it did mean that the end product was small and cost efficient to ensure we could fit everything we wanted in!” says Tushka.

Adjusting the boundary lines meant they could build on the front section while taking full advantage of the views out to Kapiti Island and the sea, and ensure that when the time came to build on the back section the houses wouldn't be obstructing each other in any way.

Positioned a short walk from the beach “meant we could have our beach home without having to endure wind blown sand and salt water right at our doorstep.” The desire to build a contemporary bach that could support everyday living was at the essence of this build, and as the architectural and interior designers of the home an ethos that was fulfilled to the finite detail.

“Nathan created a very efficient floor plan maximising the views and natural light exceptionally and ensuring that there was no wasted space or dark corridors,” says Tushka. “Even the internal stairwell leading visitors up from the front door is flooded with light.” The result is that the house has a small footprint, but is spacious enough to cater for entertaining and everyday life with generous sized bedrooms and living areas.

With daughter Georgia (4) running around the place it was important that the living spaces and bedrooms



were on a single level. The ground floor is comprised of the garage and extra storage, while the first floor area opens up to the sea view and allows for two separate outdoor living areas to act as extensions of the living space. With two dogs and a small child it was important that there was an outdoor area for them to play in, as well as an area that could be used for alfresco dining.

Working with friend and colleague Julia Williams of Drakeford Williams, Tushka and Nathan transformed their sand hill section into a simple paradise. “The landscaping was designed to have a natural rambling and uncontrolled feel to the street front to help mitigate the impact of the house on the environment.” The planting of natives in a planter box around the deck area enhances this and continued the theme of the kiwi bach lifestyle to the outdoor areas. From the kitchen and east facing bedrooms the landscape was designed to provide lush native bush views bringing the outside in.

The open plan kitchen living space draws on the outside world with the use of natural colours and textures. “I wanted to create a simple, modern interior with neutral colours,” remembers Tushka. The result is a comfortable, relaxed earthy interior comprised of varying subtle colours and textures. The use of basic Melteca in the kitchen and a CaesarStone benchtop meant that they were able to combine great finishes at an affordable price. “You don’t need to spend a fortune to






**TOP** ‘The Black Box’ as it is referred to by Nathan is constructed from ply and batten. Combined with the white Coloursteel of the ‘pavilion’ the exterior materials of the home were an economic and natural choice for this kiwi bach style home.

**MIDDLE** The alfresco dining area was designed to be an extension of the living area. The outdoor fireplace allows for late night dining and reflects the interior fireplace lines and hearth for smooth and continuous flow from inside out.

**LEFT** With a young child and two dogs it was important there was an area for outdoor play. The use of timber and native plants allowed for a low maintenance garden in keeping with the style of the home.

Windows in the kitchen, fold back to allow for uninterrupted views of the garden and ensure that Nathan (pictured) and Tushka can see Georgia whether she is playing inside or out. The kitchen and living space are painted in Resene Blanc to create a natural yet modern interior. Screenprint by Annie Sandano.



<b>THE SPECS</b>	Waikanae \$400,000 - \$500,000 220 Sq m	 1	 3	 2
------------------	---	--	---	--





Georgia and Cooper love the large open space of the living area. The chairs make a visual statement and interesting talking piece in the living room, as they were made by Tushka's Opa shortly after his arrival in New Zealand in 1955. A Simon Edwards' Canterbury landscape hangs above the fireplace.



**ABOVE** Views to the West are maximised through large glazed sliding doors. On a calm sunny day Tushka and Nathan can open the whole house up so that the interior spaces flow out to the various outdoor areas.

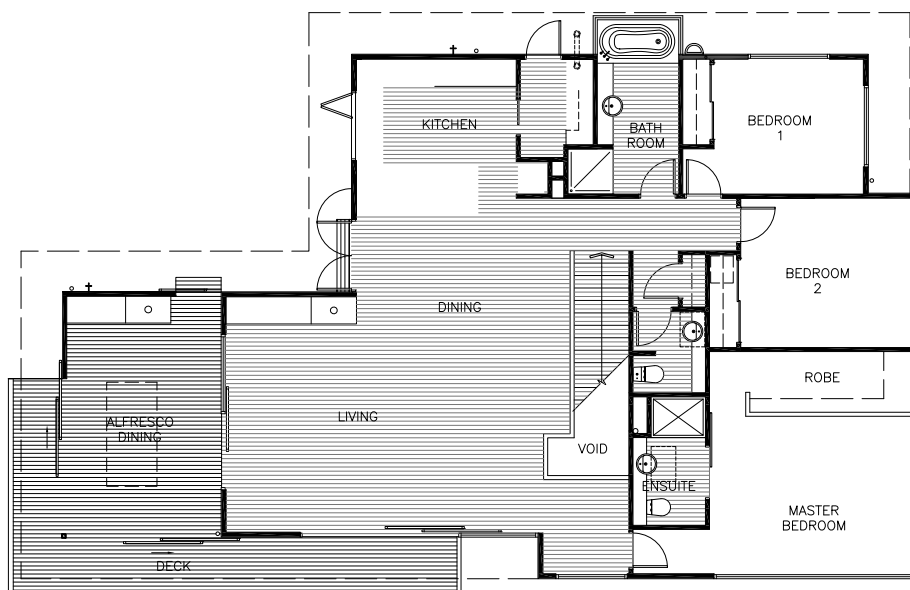
**LEFT** Surrounded by large windows the bath takes in the view of the garden outside giving the room a tropical feel.

**OPPOSITE RIGHT** The home is full of artworks by local New Zealand artists such as the art blocks by Elisabeth Vullings which are household favourites, and the jigsaw sculpture piece which was made by a North Island farmer from scrap metal.

create your dream interior. It's about how you put it together that counts; it's that part of the process that I love," enforces Tushka.

While Georgia would like her bedroom painted in a rainbow of colours, Tushka and Nathan are very pleased with the end result. Having achieved exactly what they set out to do, they are very much at home in their bach. ■

*Space Architecture Studio, 04 233 9906  
114 Mana Esplanade, Porirua, Wellington  
[www.spacearchitecture.co.nz](http://www.spacearchitecture.co.nz)*



## Q&A

with Tushka Glintmeyer & Nathan Rooney

### What was your design brief?

We wanted a home that fitted with the beach context and referenced some of the existing older bachs in the area without replicating them. We wanted a home that was a contemporary take on a holiday beach house with strong indoor-outdoor living, and all the necessities for permanent living.

### How did this translate into the final design?

We drew on the flat roofs, large fascias, square forms and materials that appear in the homes surrounding the section, and ensured there was a strong connection with the outdoors which is typical of holiday living.

### For such a small floor plan there is a lot of useable space. Tell us about this.

We tried to make the floor plan as efficient as possible with as much useable space as we could get. We both loathe hallways and 'dead space' so maximised the open plan feel of the home, which has also meant that we get a lot of natural light into most areas of the house. This in turn creates a very light and airy interior space.

### What do you love most?

We designed the master bedroom so that it was an aesthetic but functional space. No matter where you are in the room you can see out to the sea. It's great. We also love the alfresco dining area. The outdoor fire is wonderful. The timber slats are Kwila with a Resene Kwila stain to retain the colour.

